



76080062

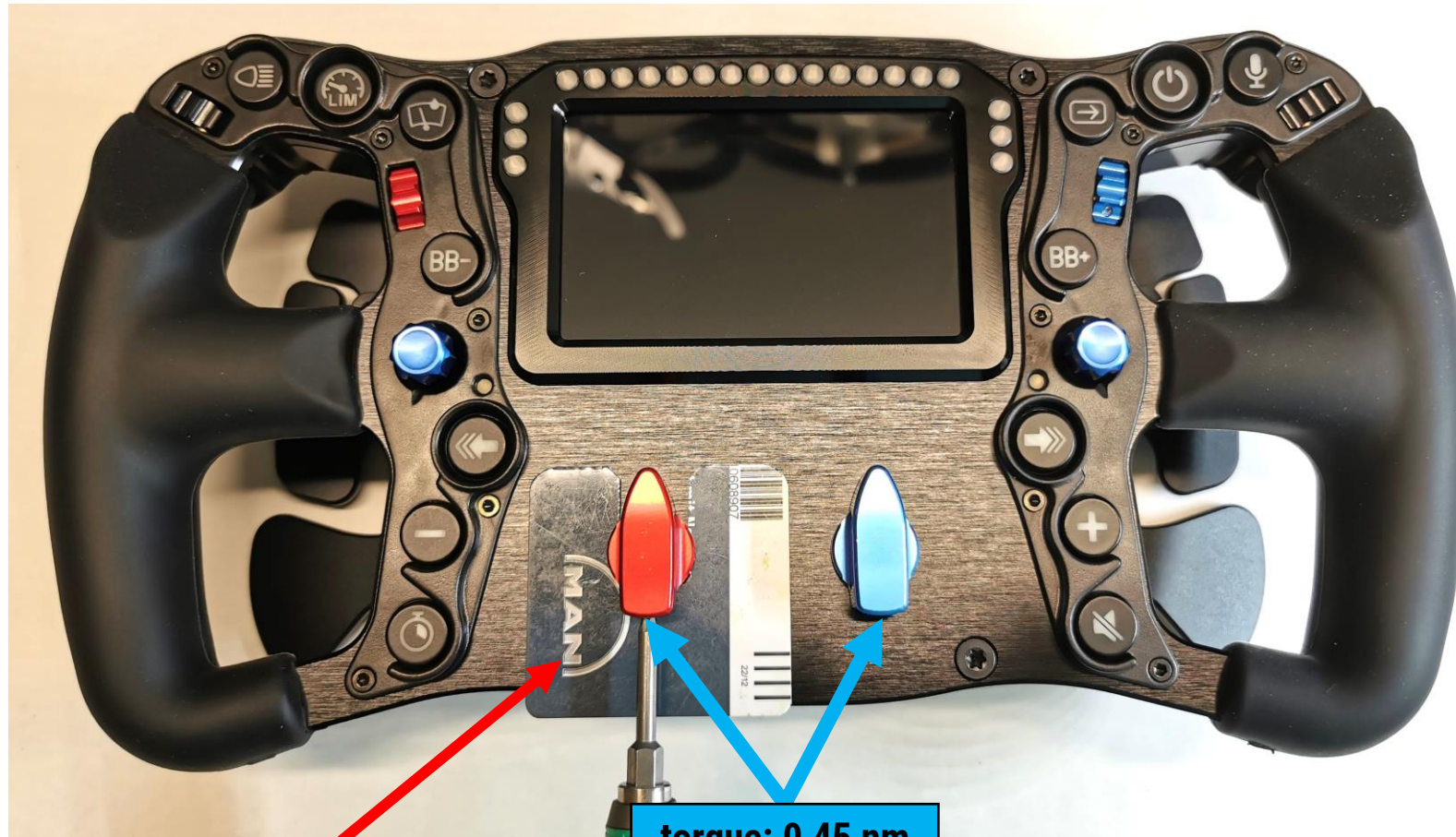
ARTURA KNOB KIT PRO
ASSEMBLY MANUAL



TABLE OF CONTENTS

1. DISMOUNT KNOBS – ROTARY	2	7. SWAP THUMB ENCODER	9
2. DISMOUNT KNOBS – JOYSTICKS	3	8. MOUNT THUMB ENCODERS	10
3. DISMOUNT CASING – FRONTPLATE	4	9. MOUNT CASING – FRONTPLATE	11
4. UNPLUG CABLES	5	10. MOUNT CASING – FRONTPLATE	12
5. UNPLUG ENCODER CABLES	7	11. MOUNT KNOBS – JOYSTICK	13
6. DISMOUNT THUMB ENCODERS	8	12. MOUNT KNOBS – ROTARY	14

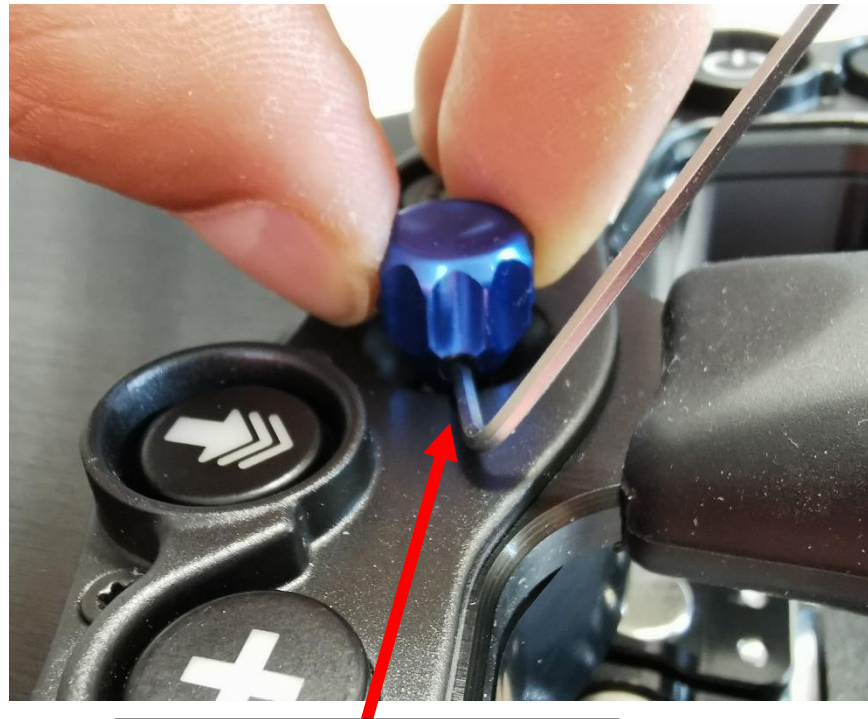
1. DISMOUNT KNOBS - ROTARY



use plastic card to create a gap of 1mm between knob and frontplate

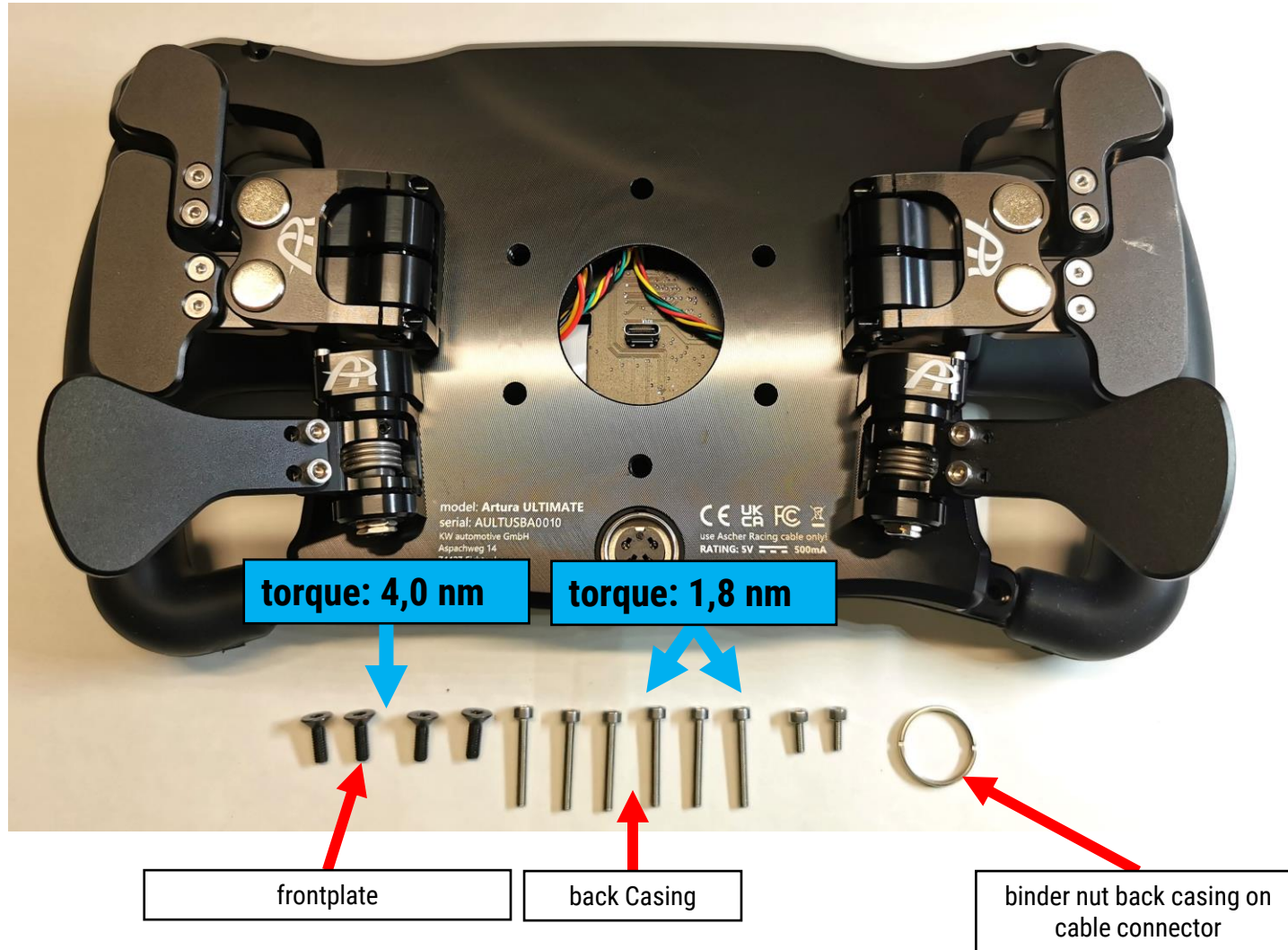
torque: 0,45 nm

2. DISMOUNT KNOBS - JOYSTICKS

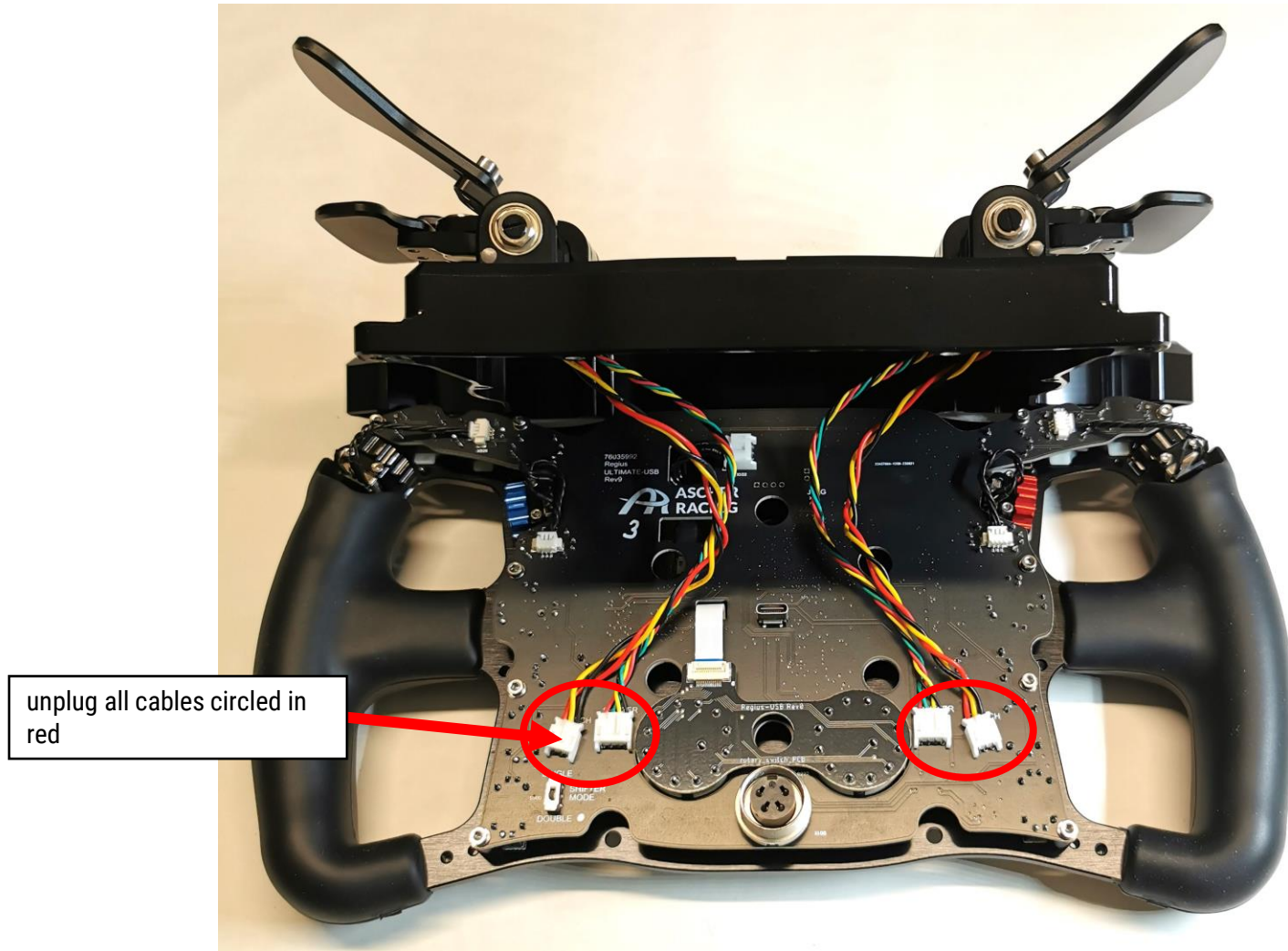


turn joystick so that the hex tool fit's in the groove of to plastic button cover

3. DISMOUNT CASING - FRONTPLATE

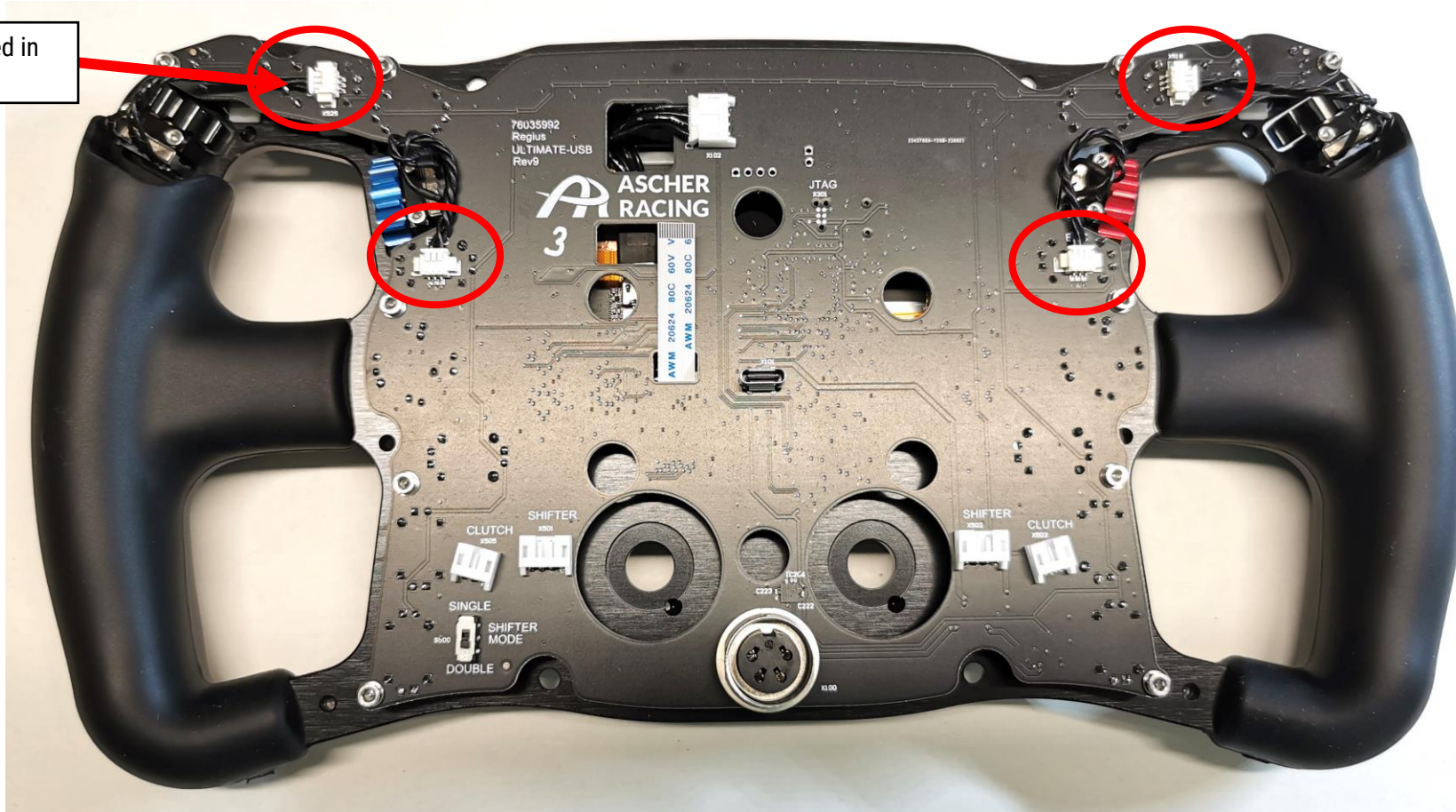


4. UNPLUG CABLES / REMOVE BACKPLATE

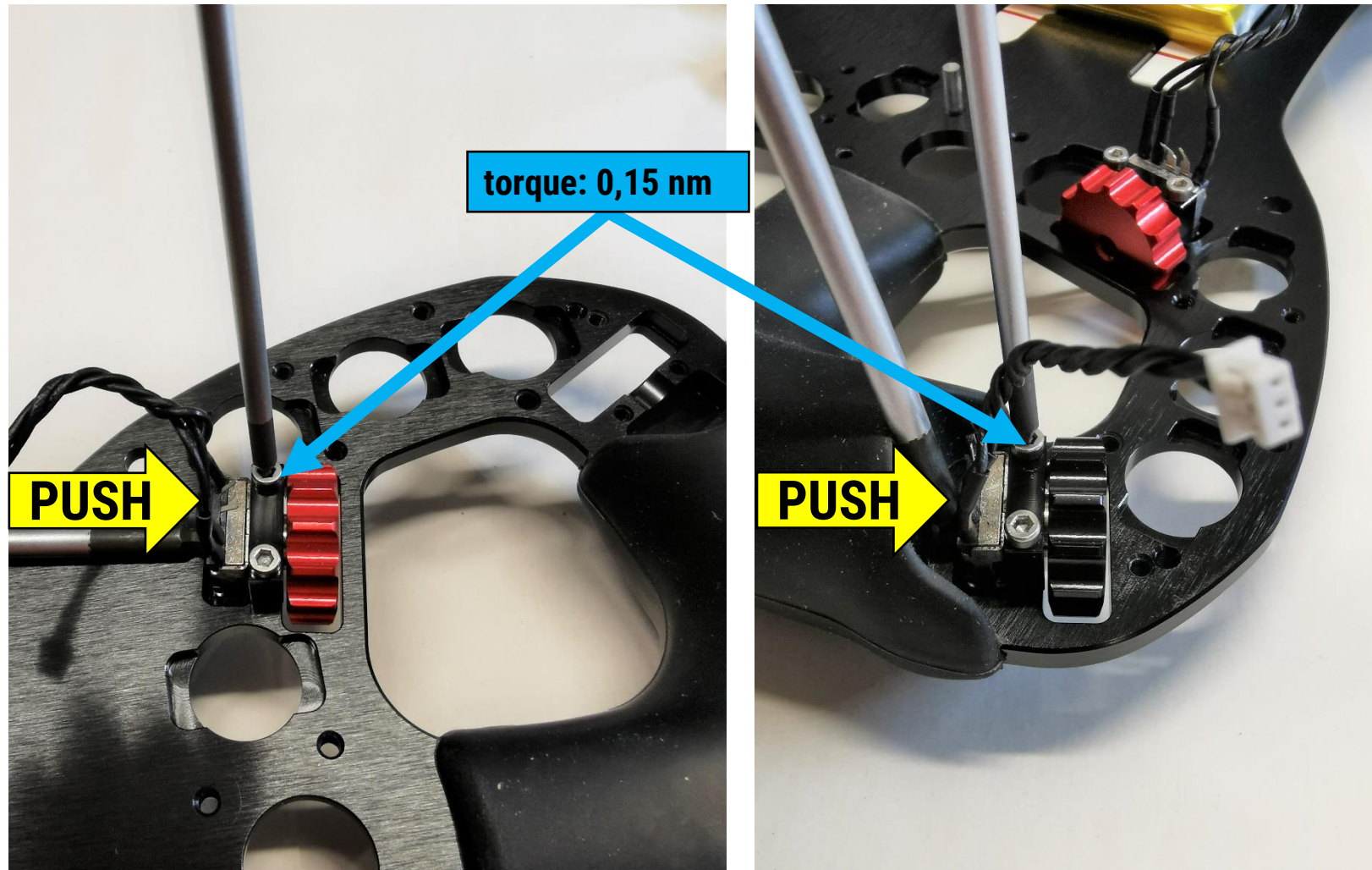


5. UNPLUG ENCODER CABLES

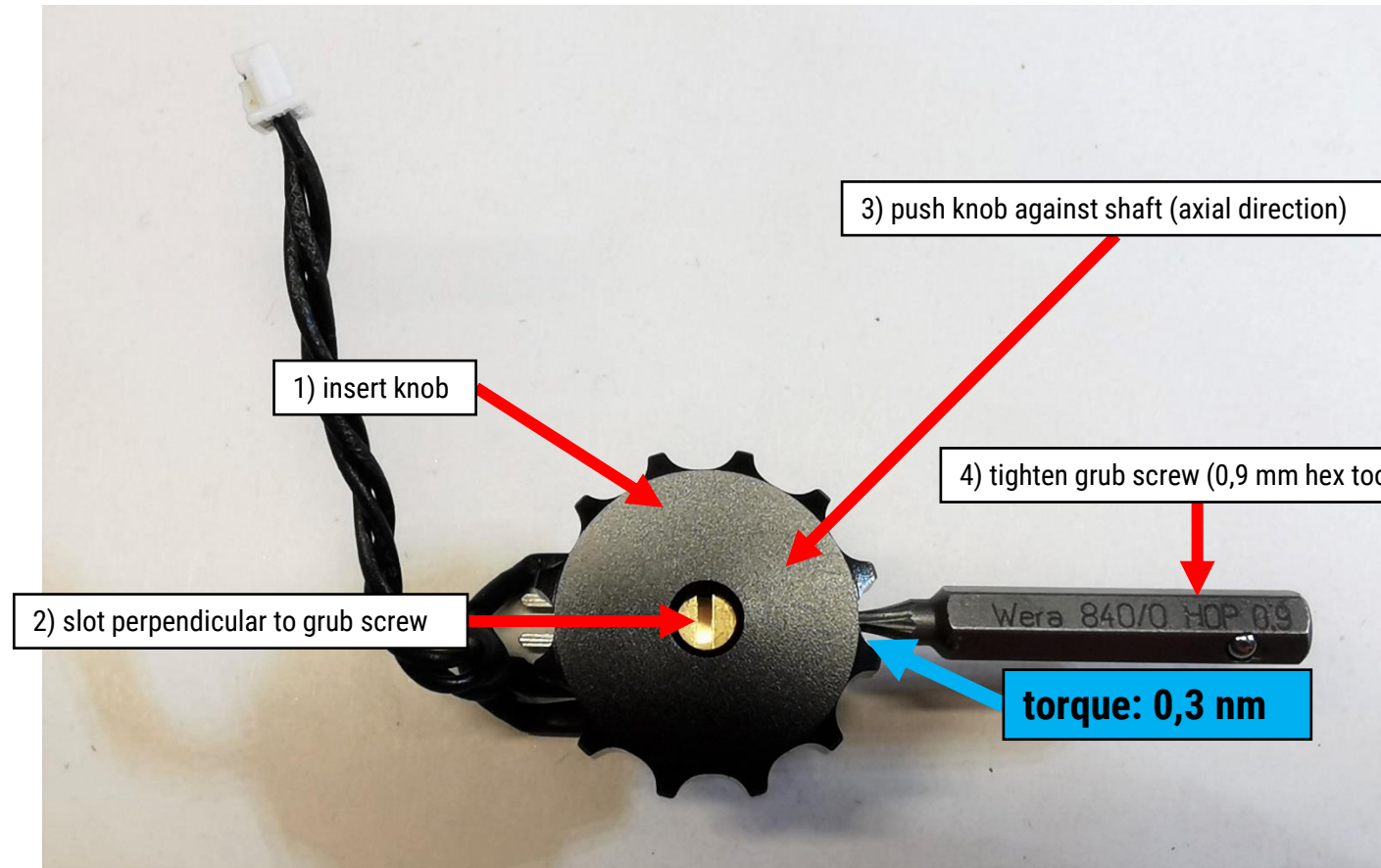
unplug all cables circled in red



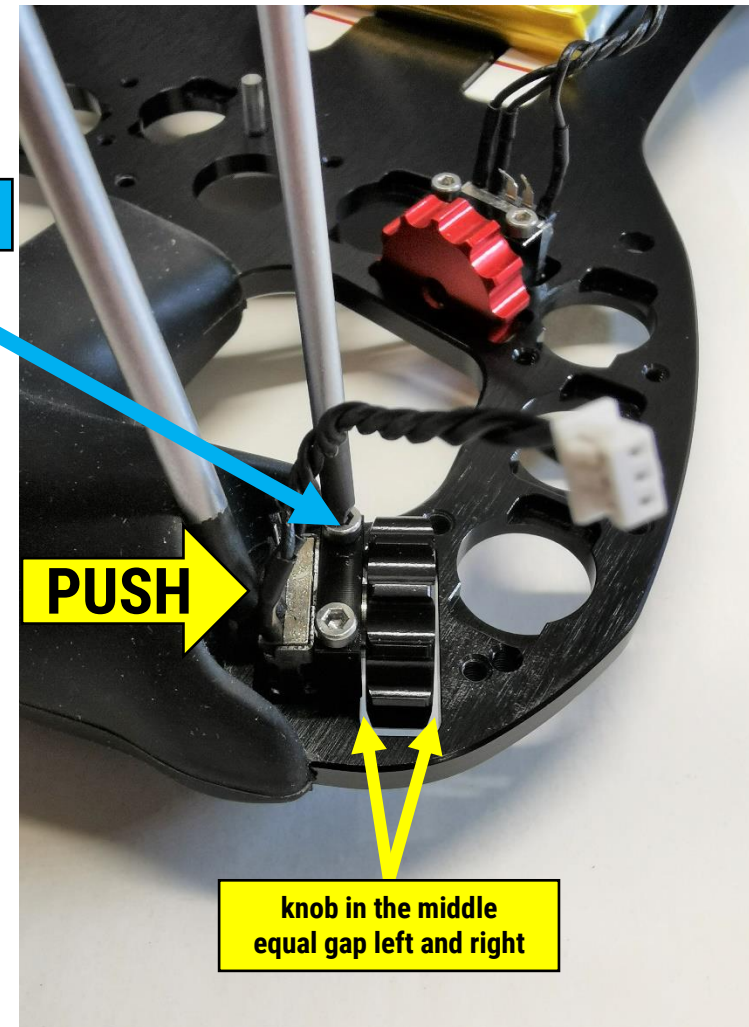
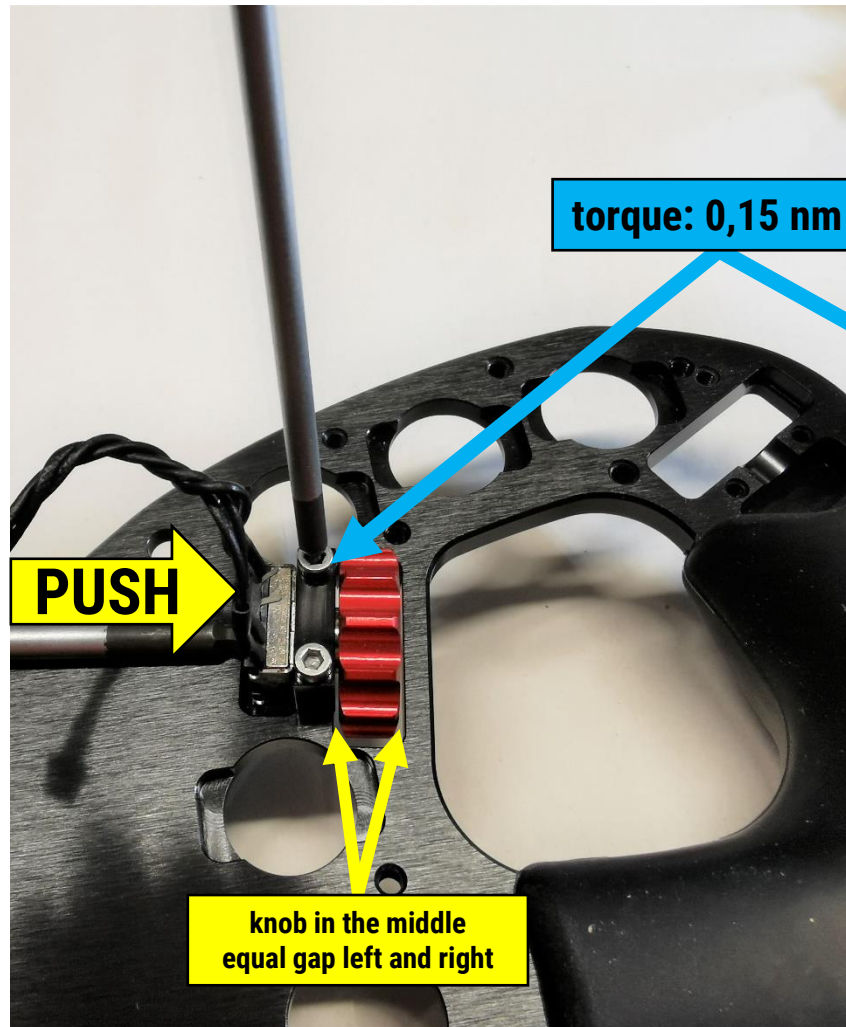
6. DISMOUNT THUMB ENCODERS



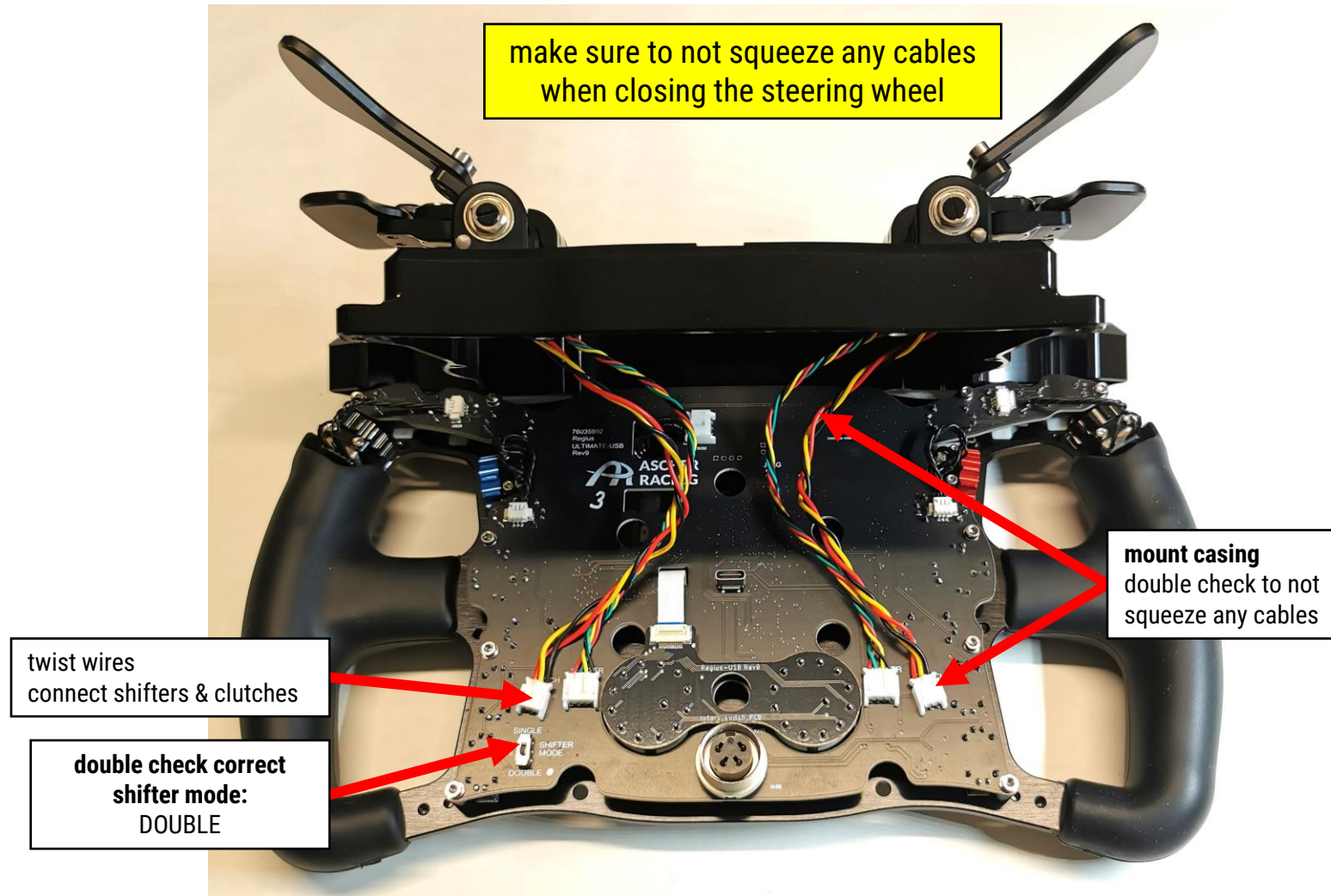
7. SWAP THUMB ENCODER



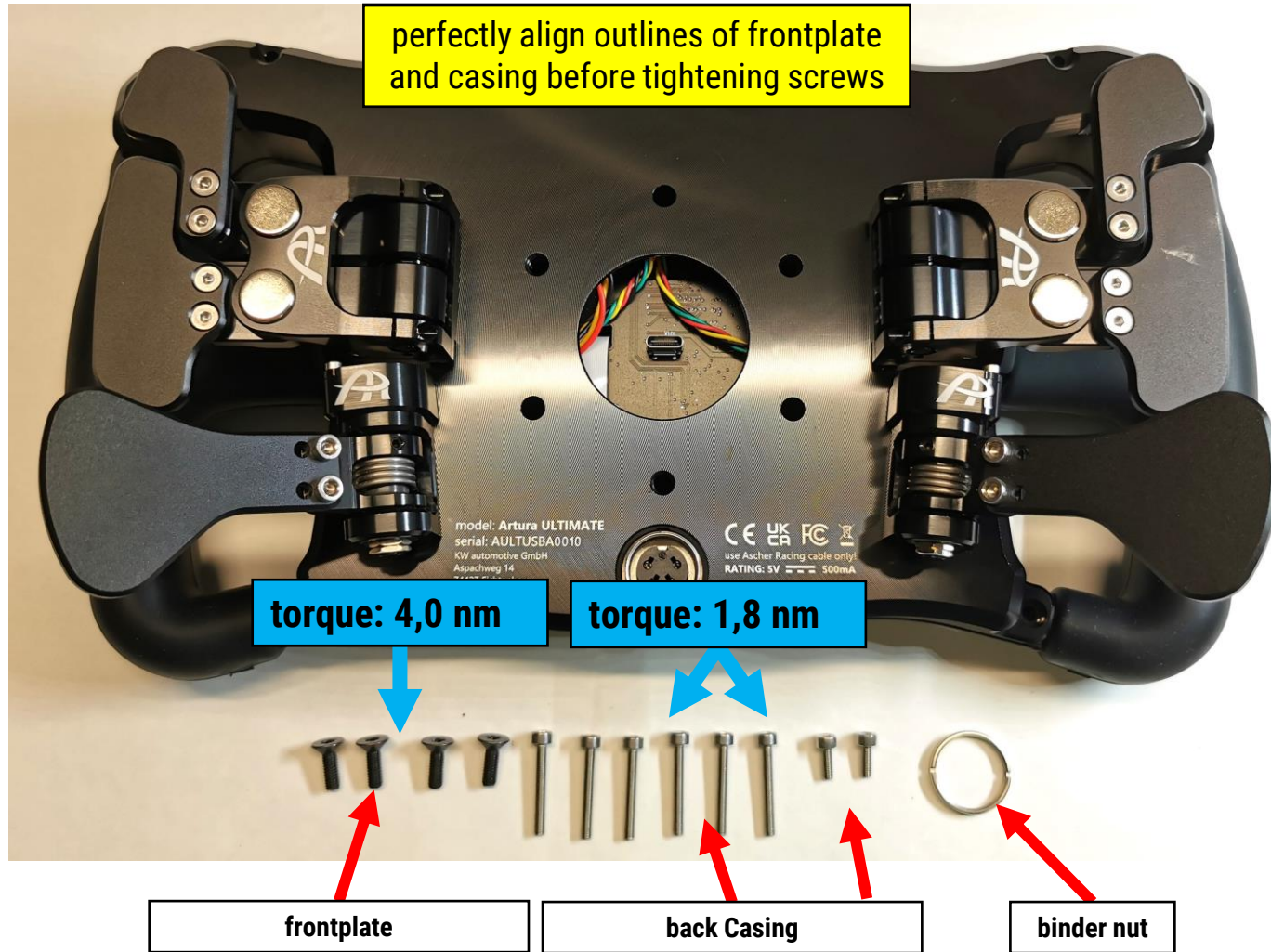
8. MOUNT THUMB ENCODERS



9. MOUNT CASING - FRONTPLATE

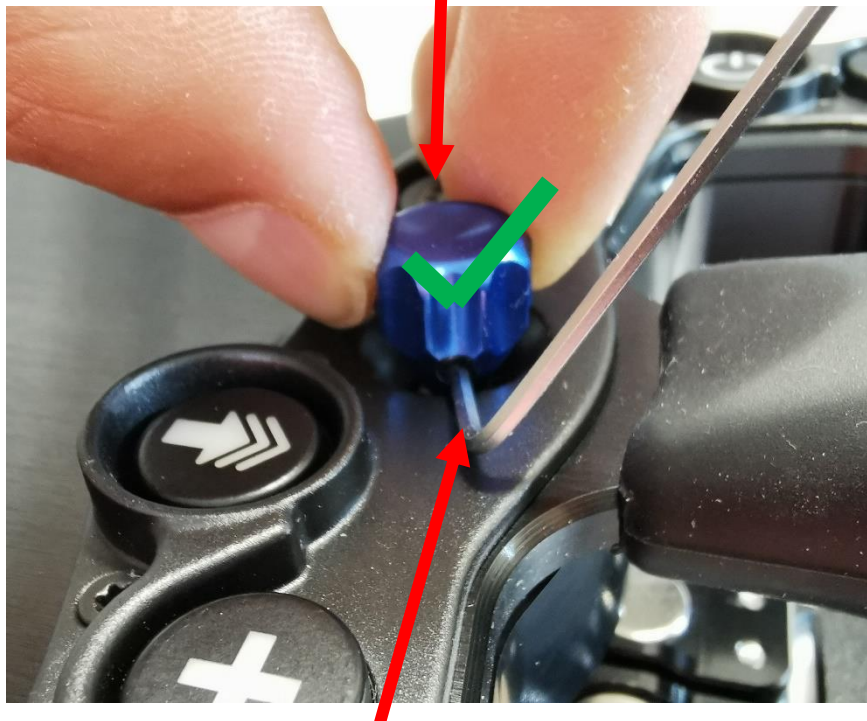


10. MOUNT CASING - FRONTPLATE



11. MOUNT KNOBS - JOYSTICK

hold joystick knob with fingers when tightening the grub screw!

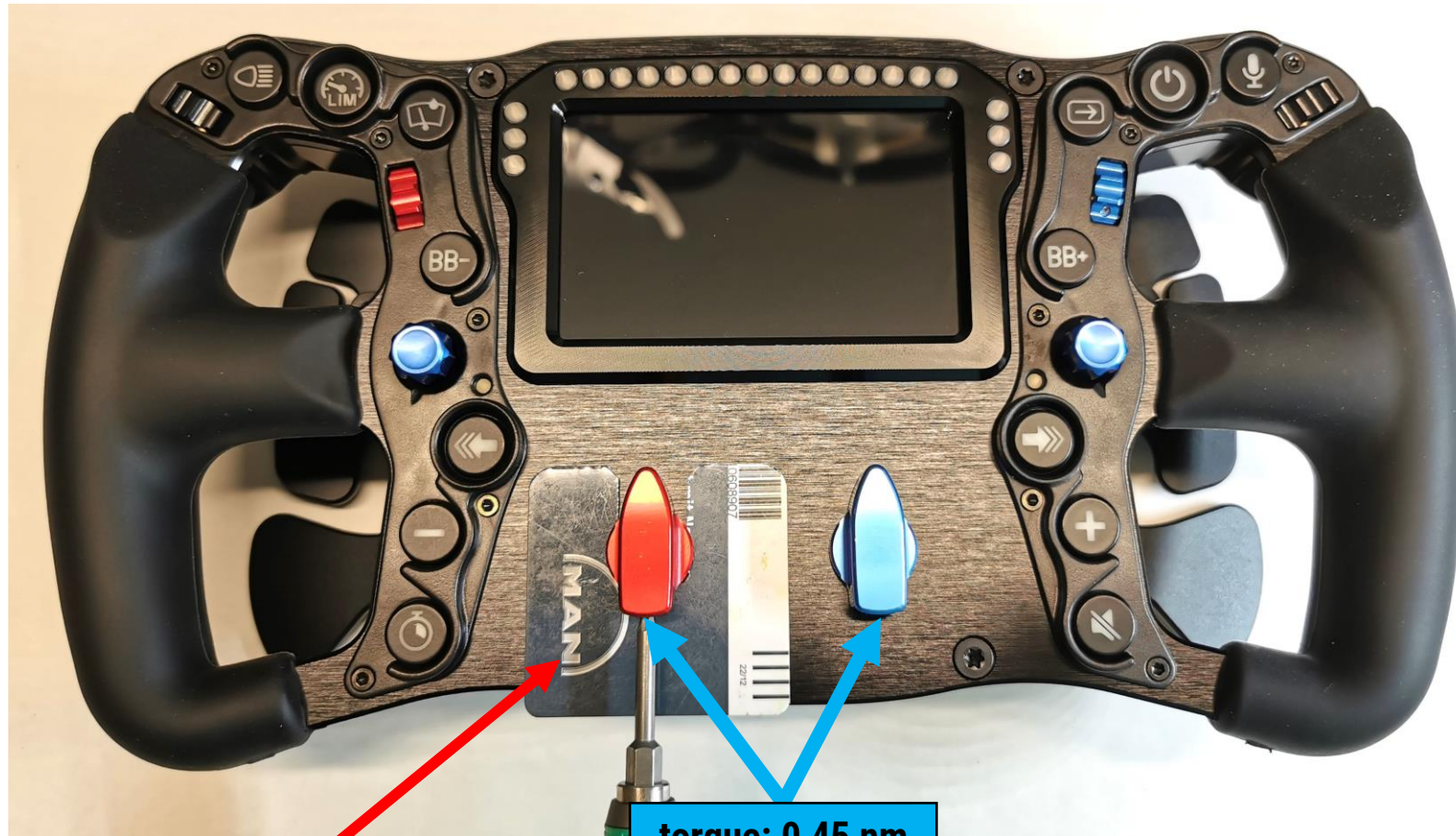


turn joystick so that the hex tool fit's in the groove of to plastic button cover

do not tighten the grub screw without holding the knob in order to avoid joystick damage!



12. MOUNT KNOBS - ROTARY



use plastic card to create a gap of 1mm between knob and frontplate

torque: 0,45 nm

Now get back behind the wheel and enjoy!

For questions regarding the process of swapping any components, please don't hesitate and contact info@ascher-racing.com