



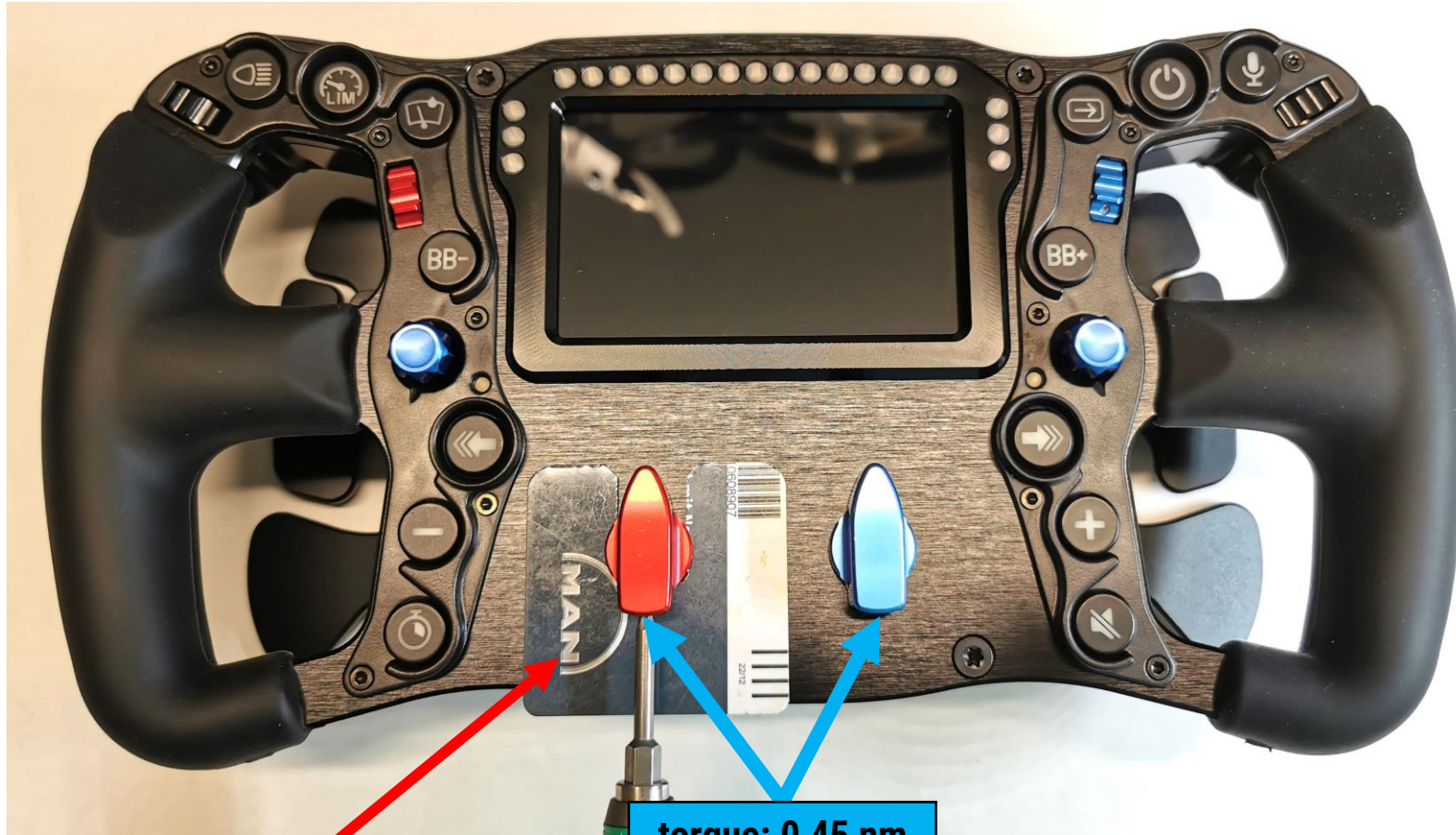
76080062
KNOB KIT PRO
ASSEMBLY MANUAL



TABLE OF CONTENTS

1. DISMOUNT KNOBS – ROTARY	2	11. Mount PCB	12
2. DISMOUNT KNOBS – JOYSTICKS	3	12. Mount rotary switch	13
3. DISMOUNT CASING – FRONTPLATE	4	13. Mount rotary switch	14
4. UNPLUG CABLES	5	14. Mount casing – frontplate	15
5. DISMOUNT ROTARY SWITCH	6	15. Mount casing – frontplate	16
6. DISMOUNT PCB	7	16. Mount knobs – Joystick	17
7. DISMOUNT THUMB ENCODERS	8	17. Mount knobs – Rotary	18
8. SWAP THUMB ENCODER	9		
9. MOUNT THUMB ENCODERS	10		
10. MOUNT PCB	11		

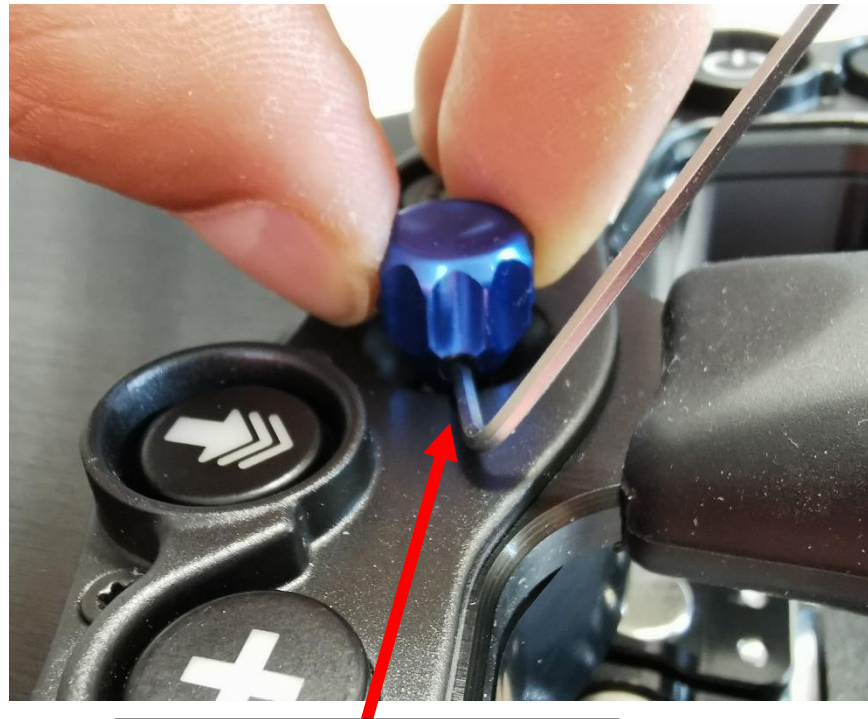
1. DISMOUNT KNOBS - ROTARY



use plastic card to create a gap of 1mm between knob and frontplate

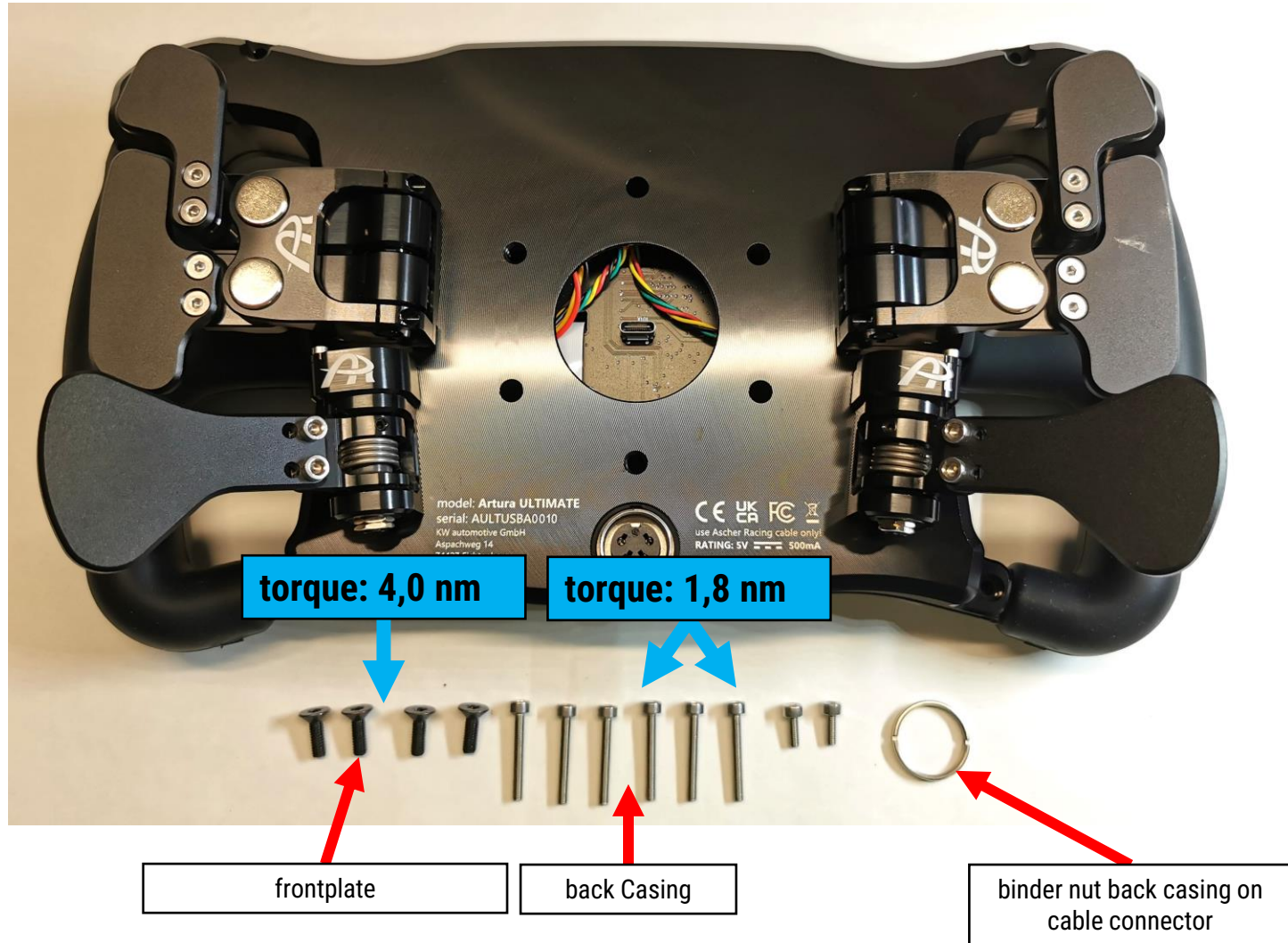
torque: 0,45 nm

2. DISMOUNT KNOBS - JOYSTICKS

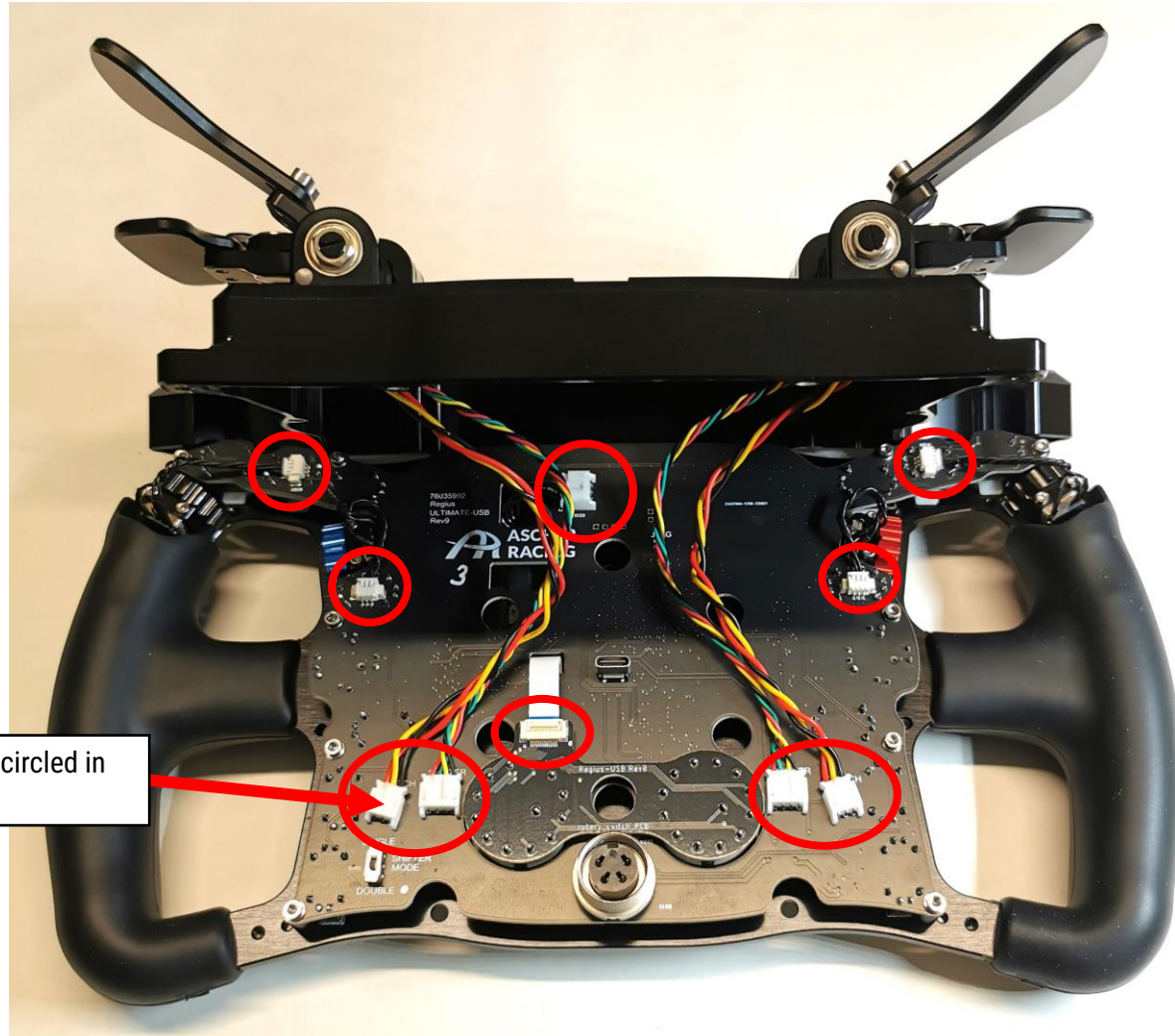


turn joystick so that the hex tool fit's in the groove of to plastic button cover

3. DISMOUNT CASING - FRONTPLATE

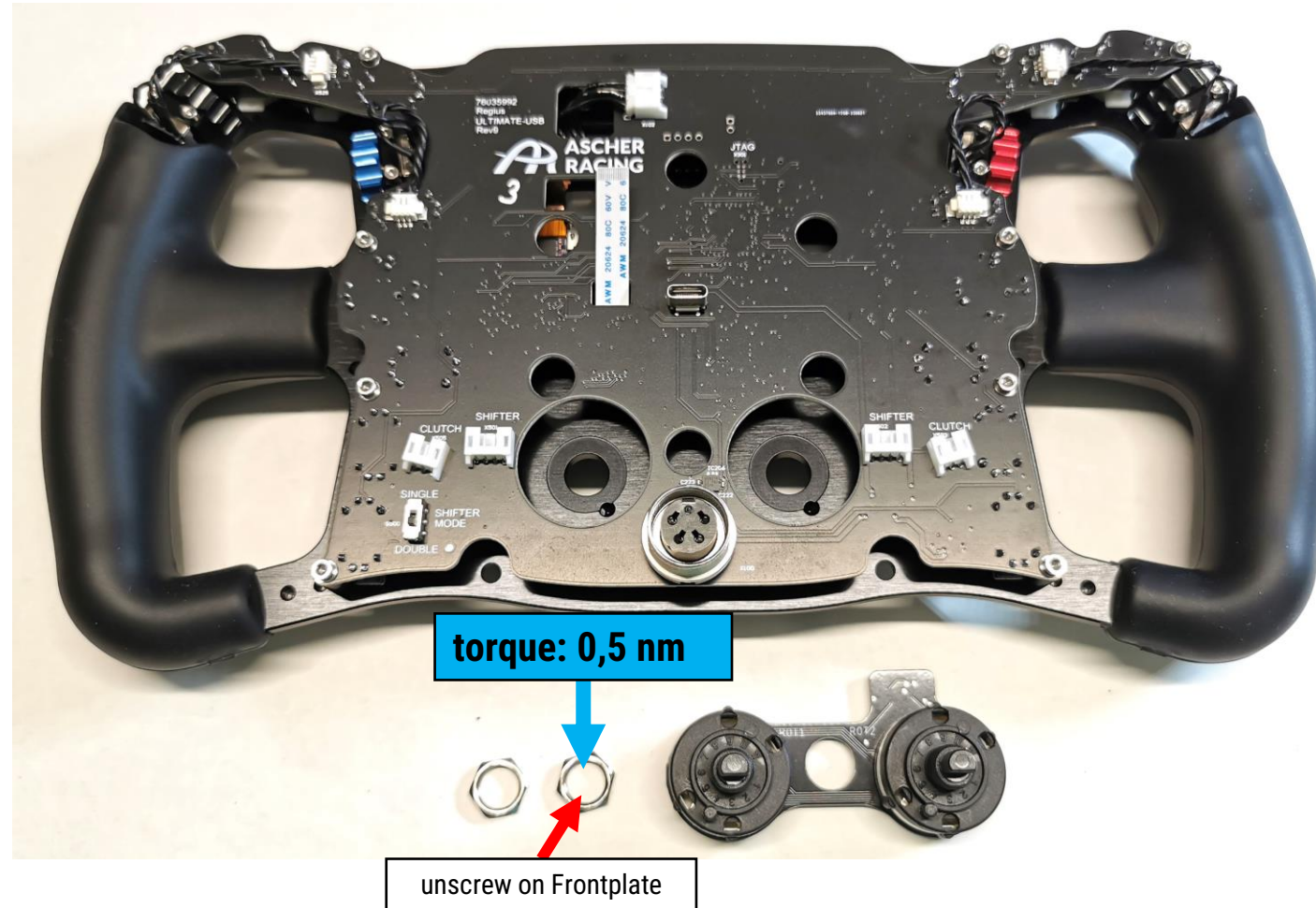


4. UNPLUG CABLES

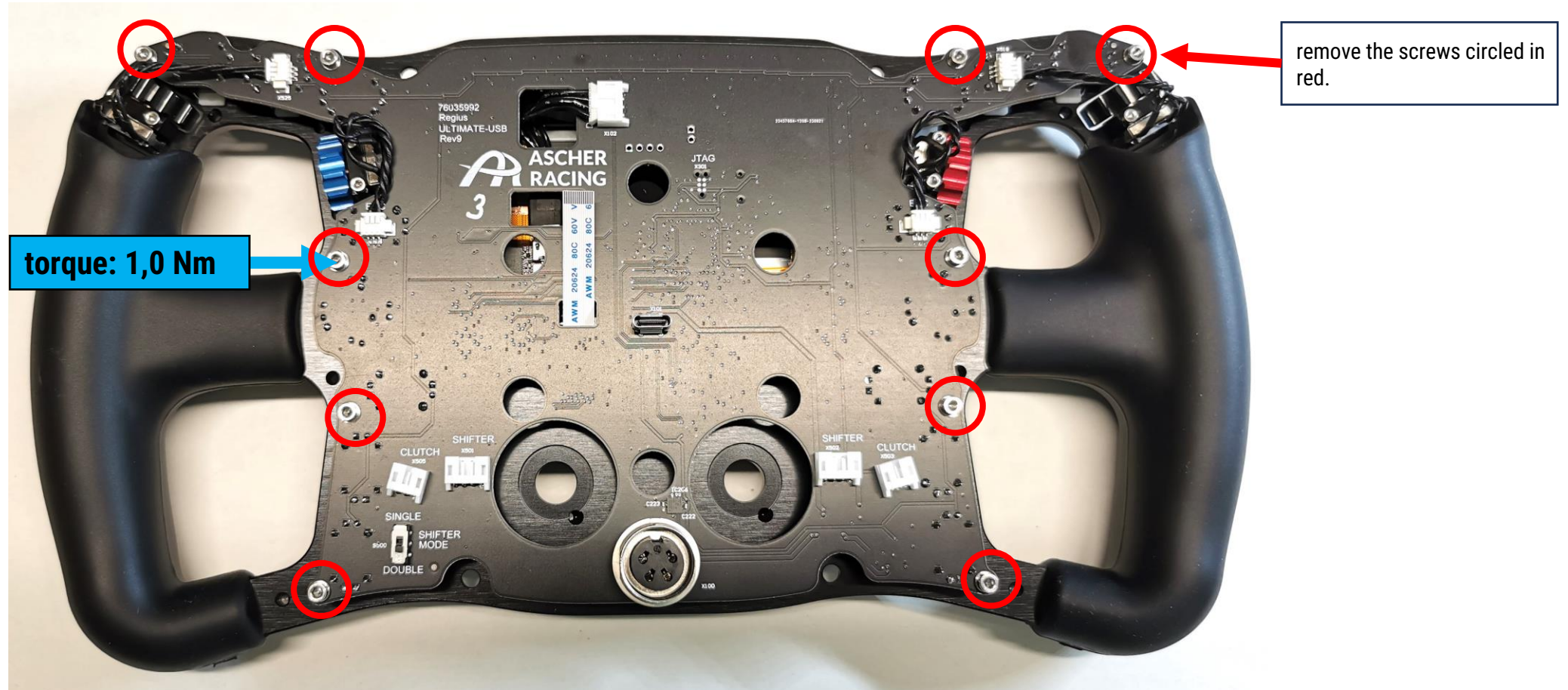


unplug all cables circled in red

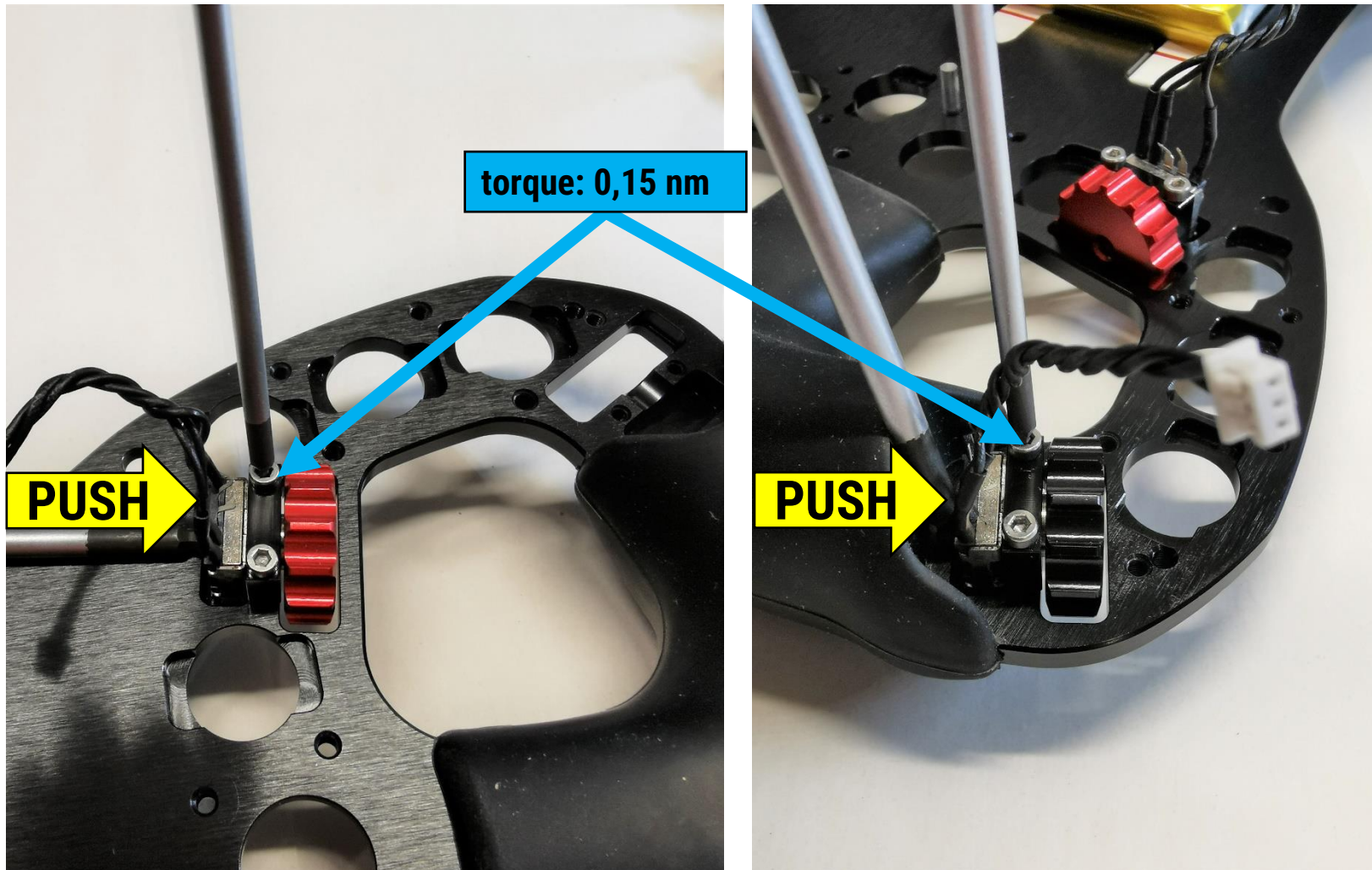
5. DISMOUNT ROTARY SWITCH



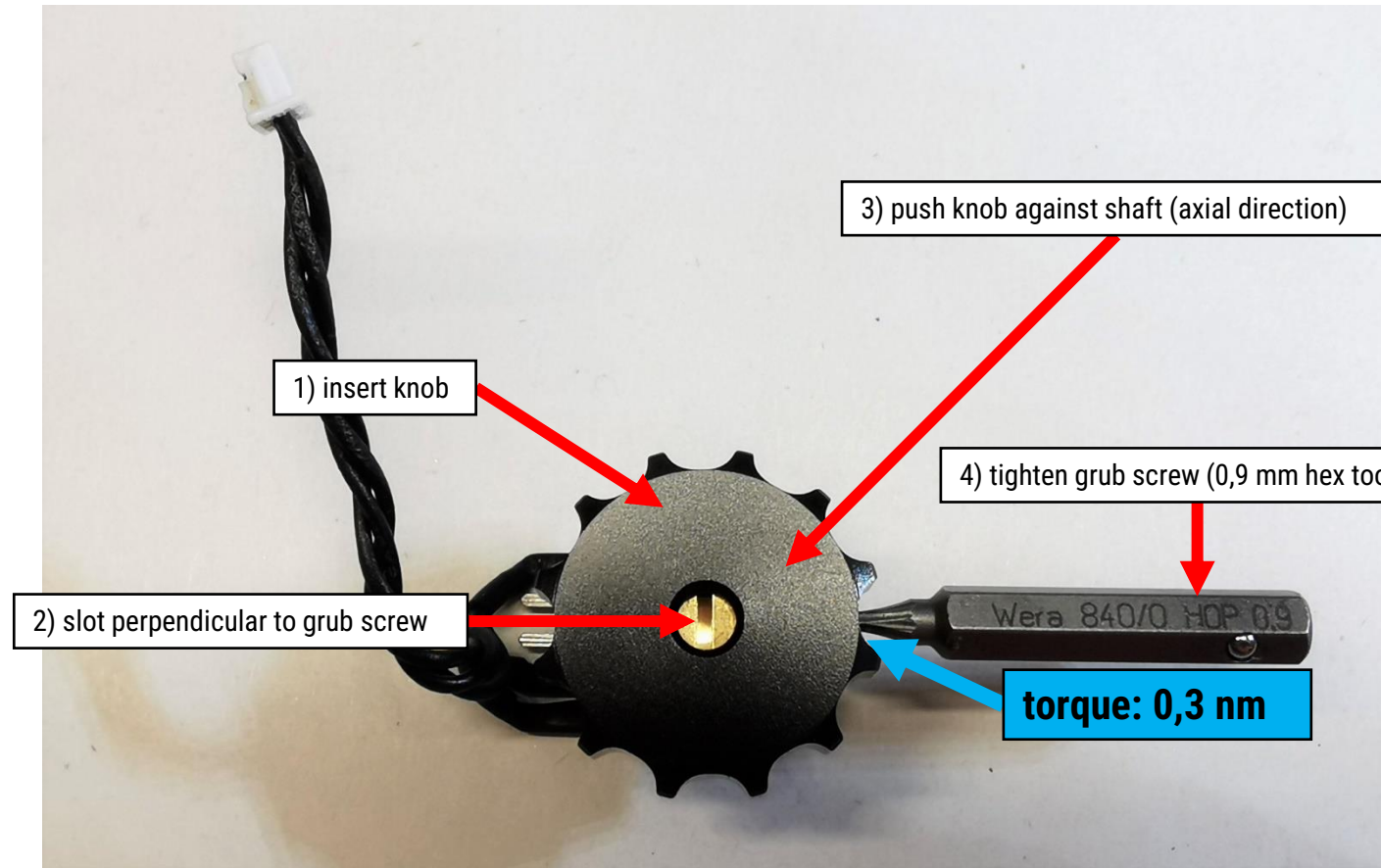
6. DISMOUNT PCB



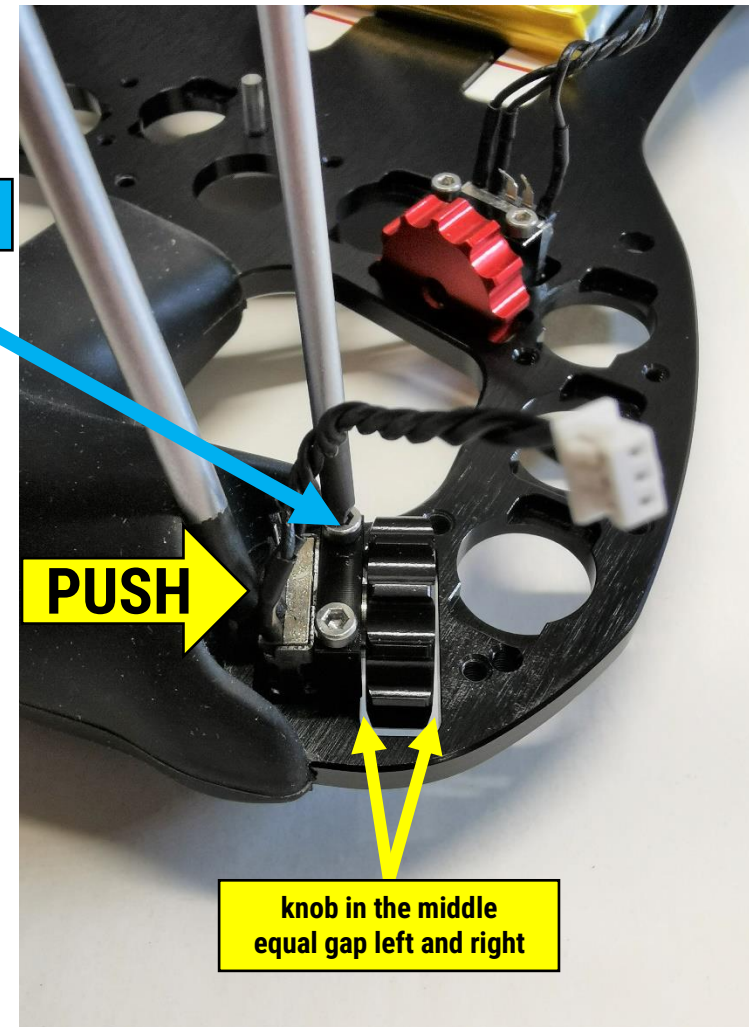
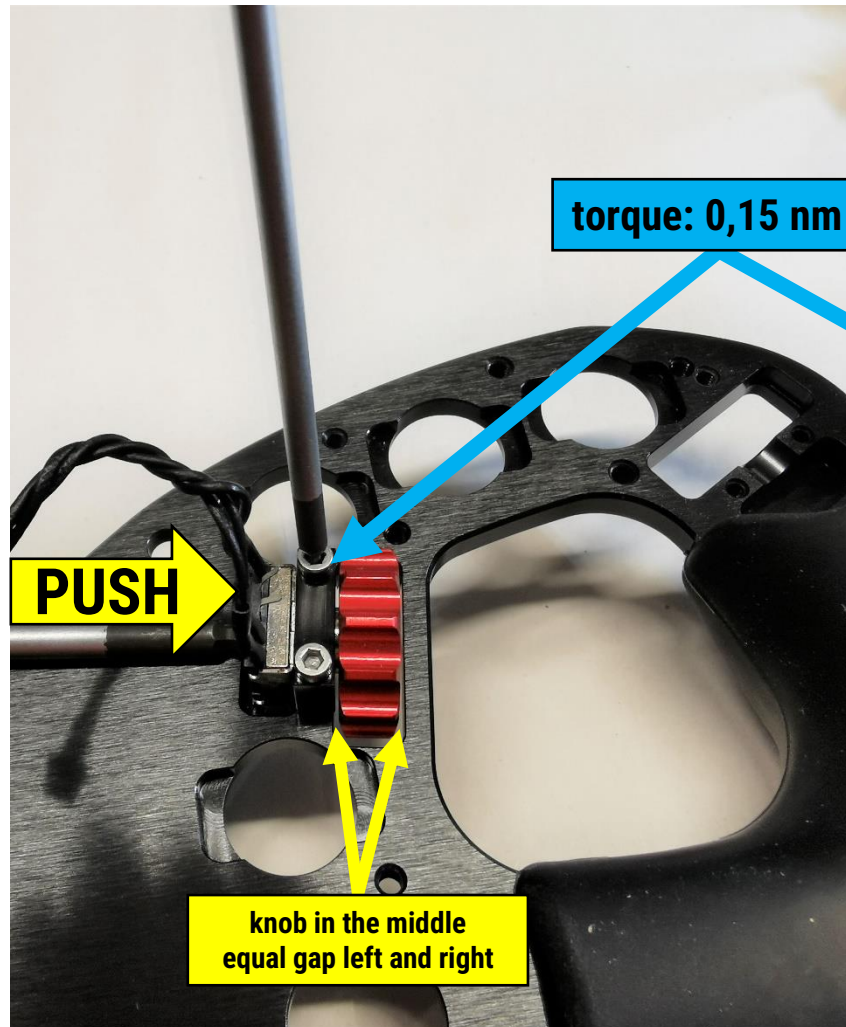
7. DISMOUNT THUMB ENCODERS



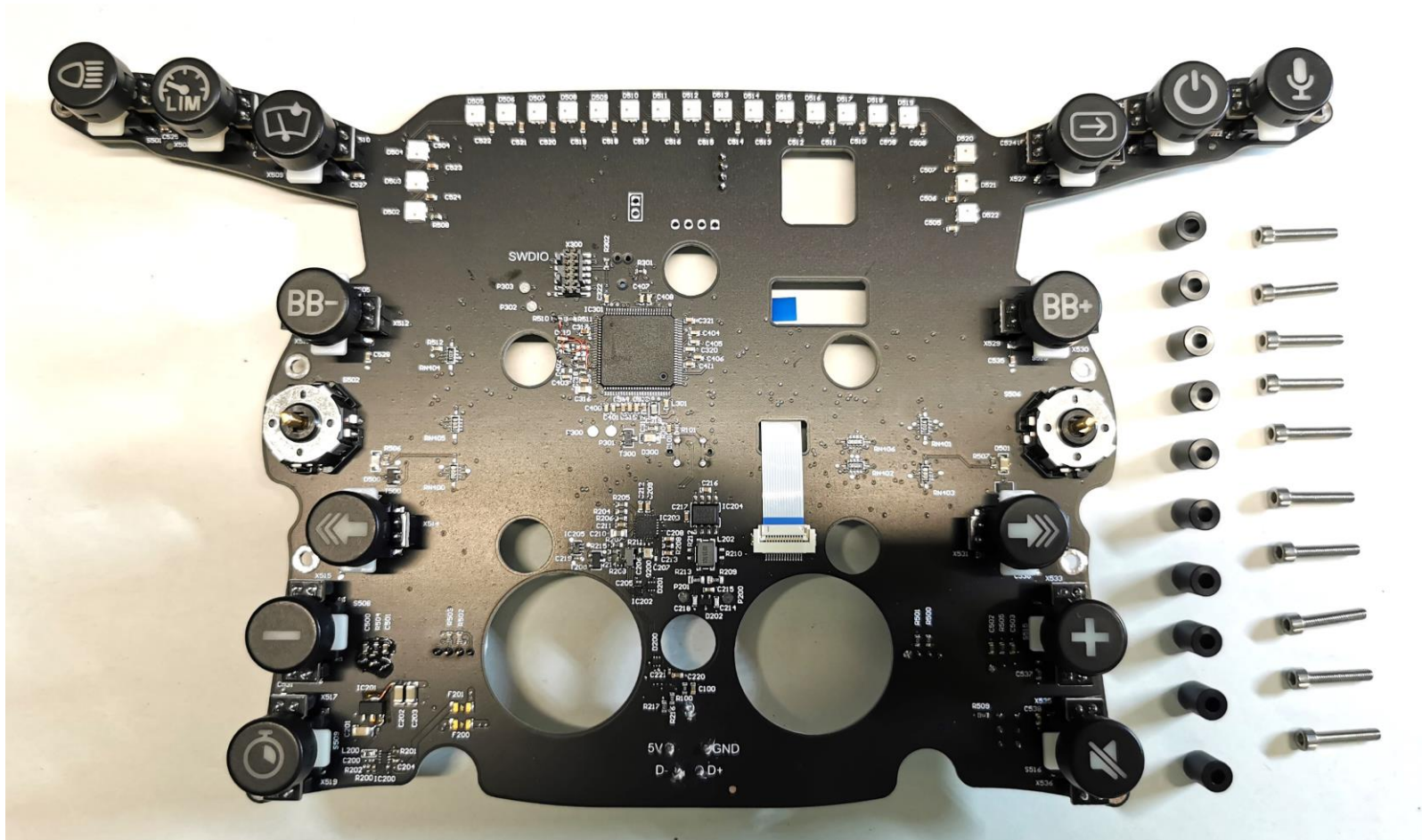
8. SWAP THUMB ENCODER



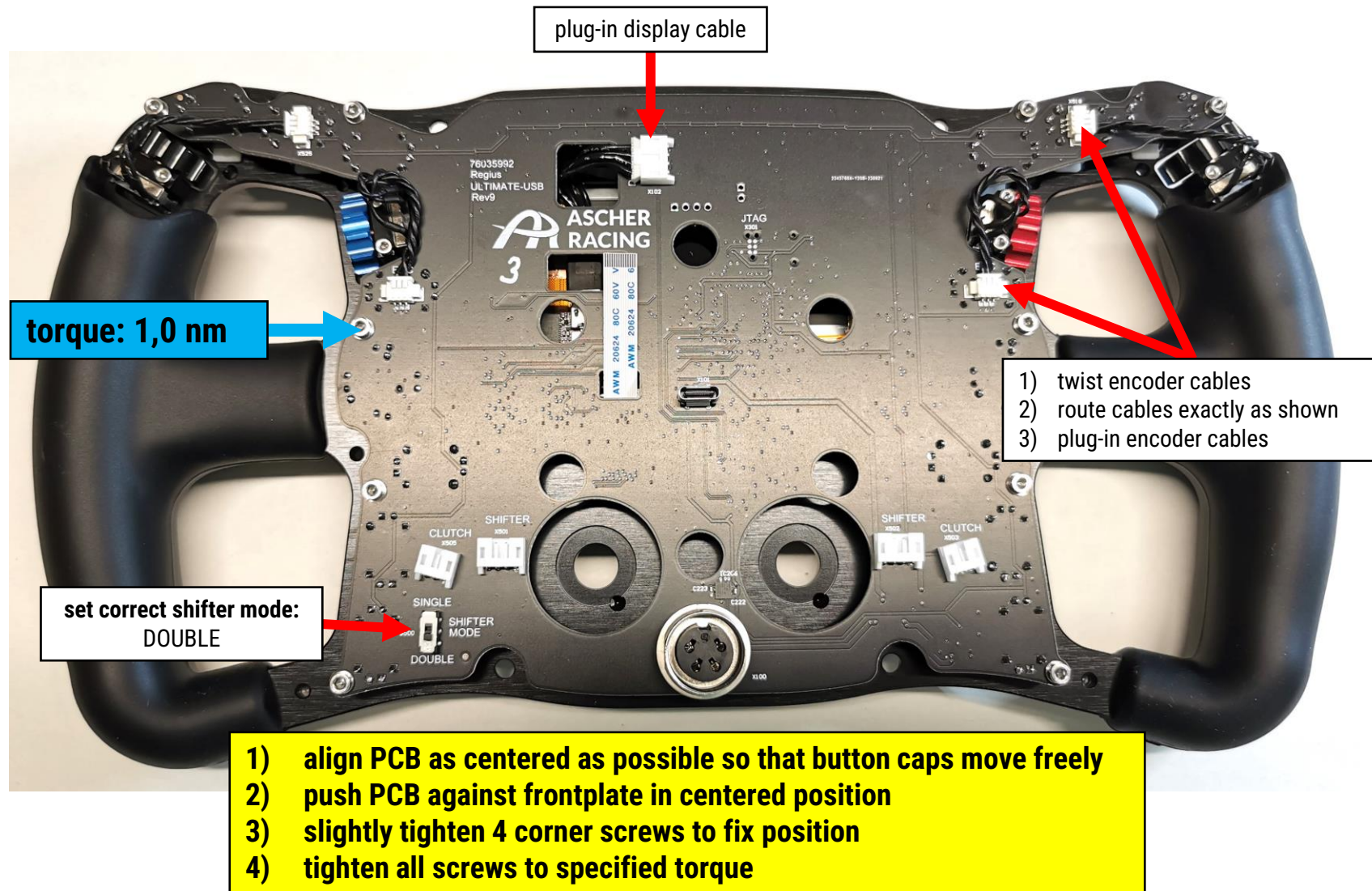
9. MOUNT THUMB ENCODERS



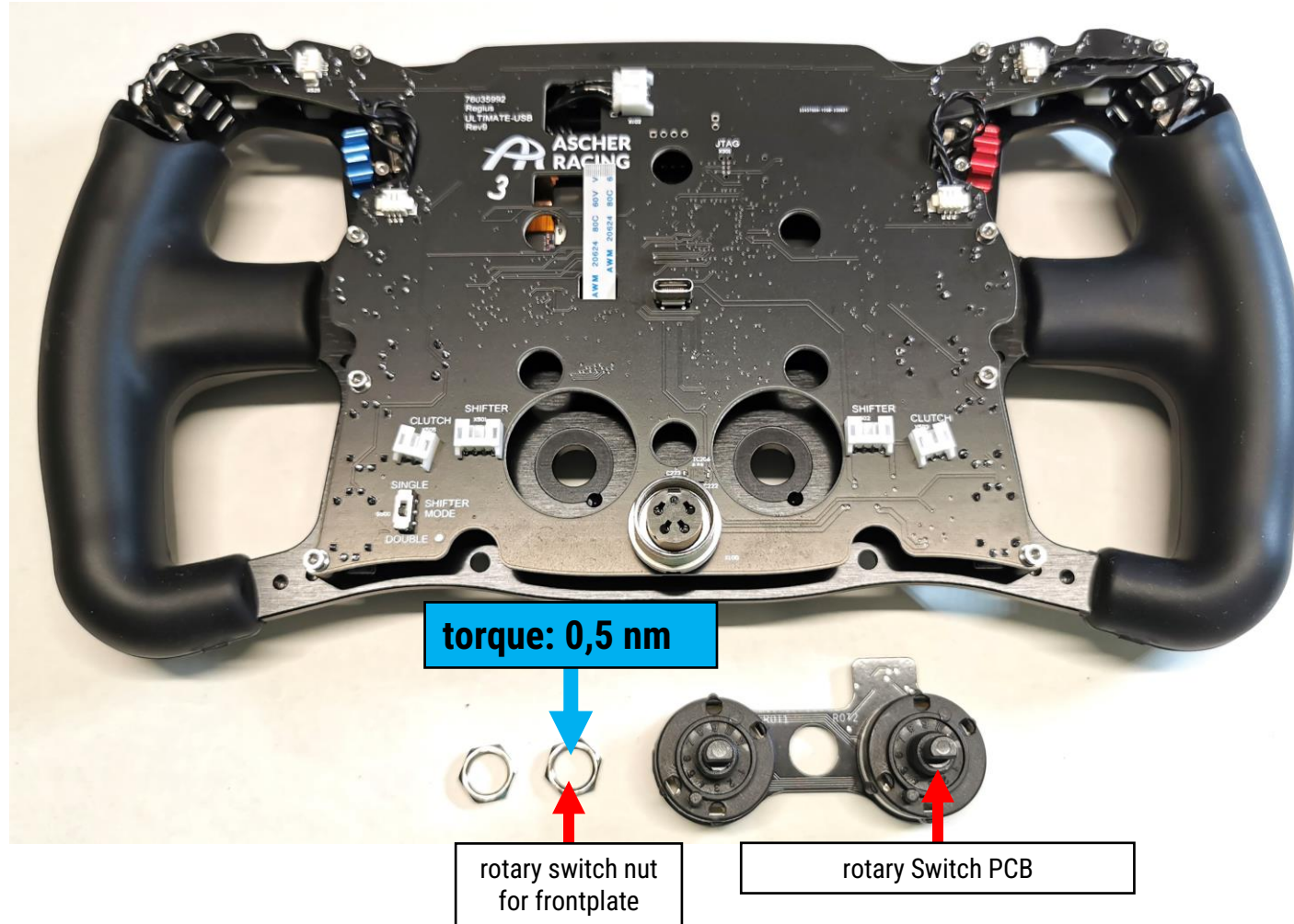
10. MOUNT PCB



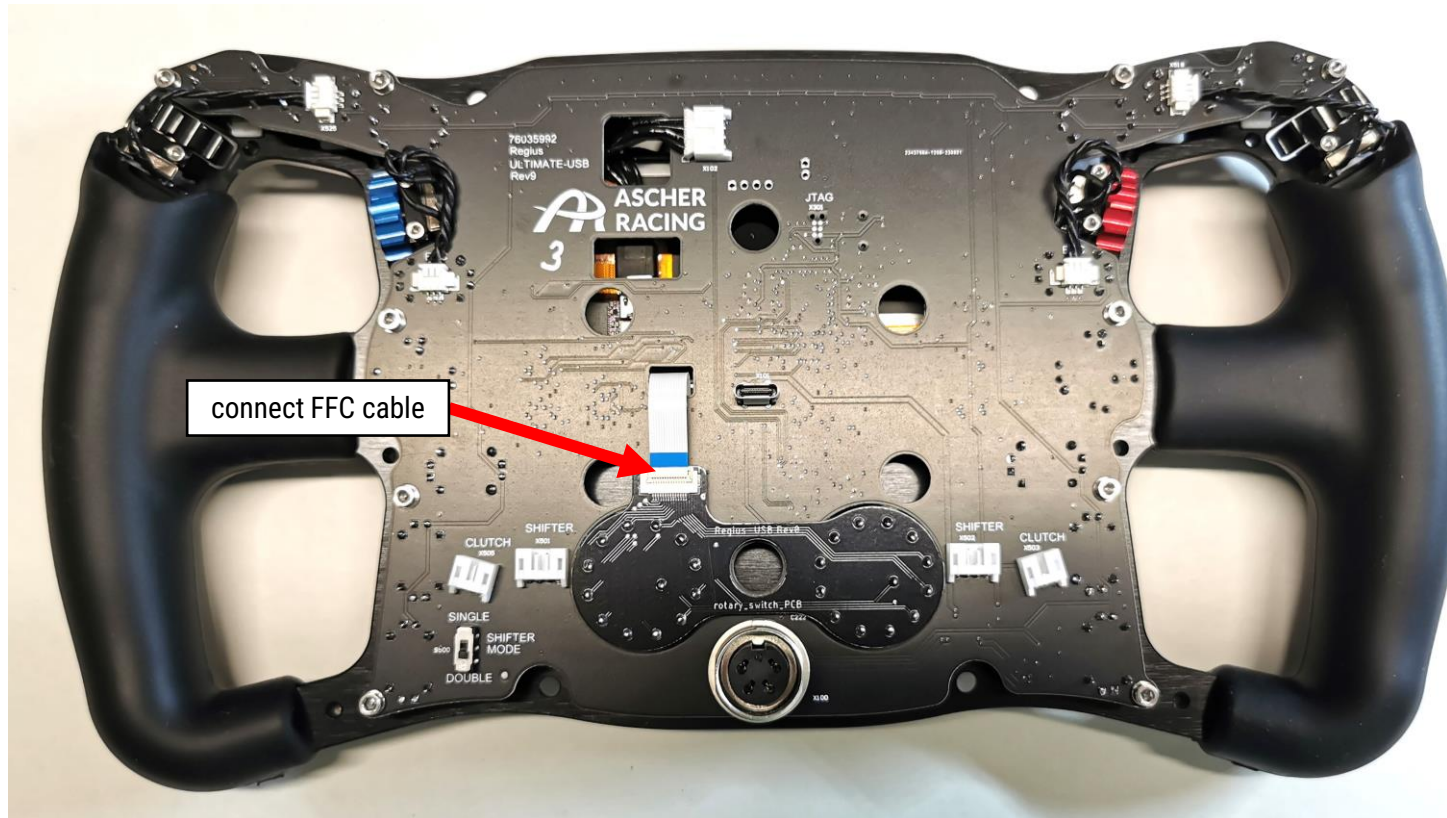
11. MOUNT PCB



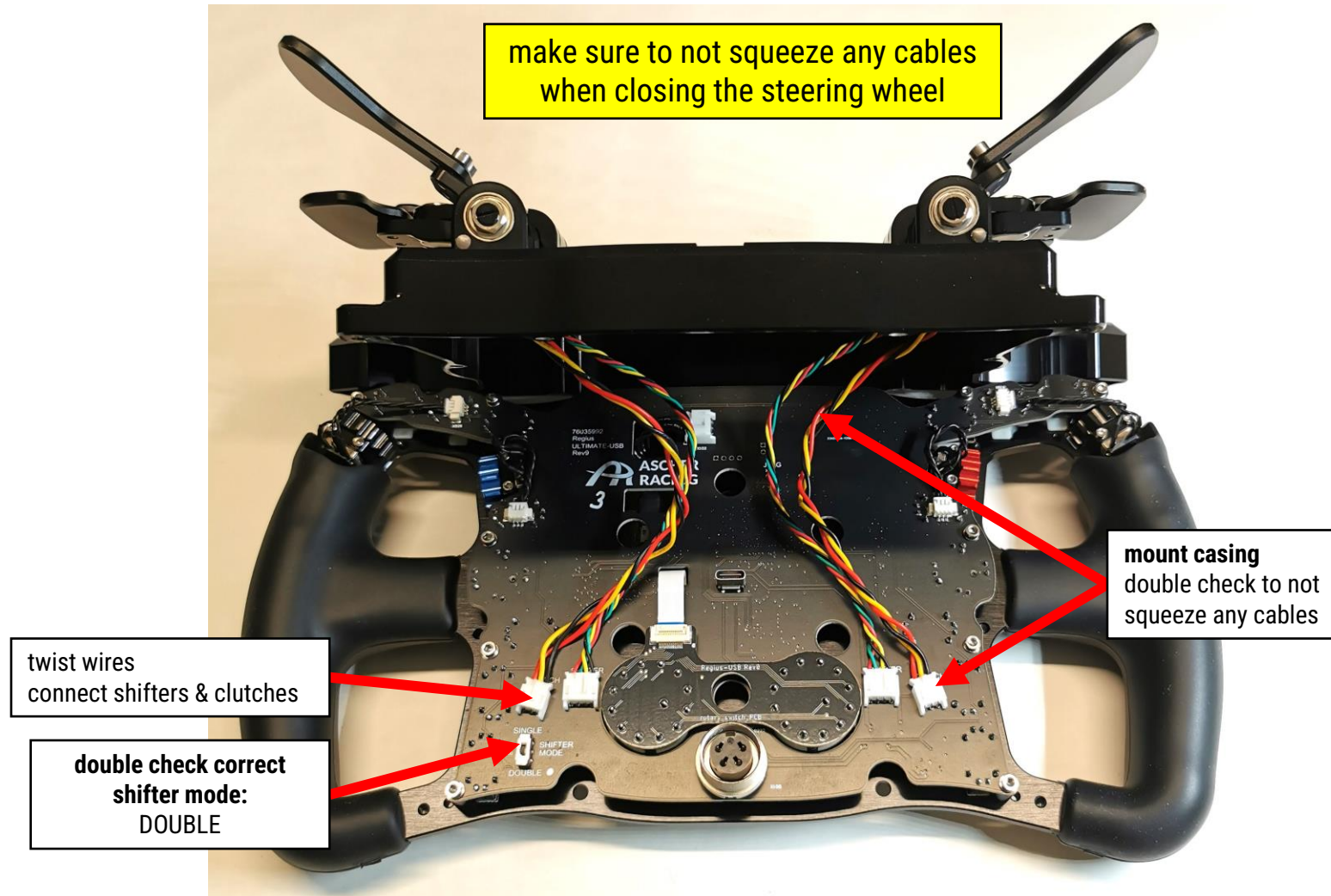
12. MOUNT ROTARY SWITCH



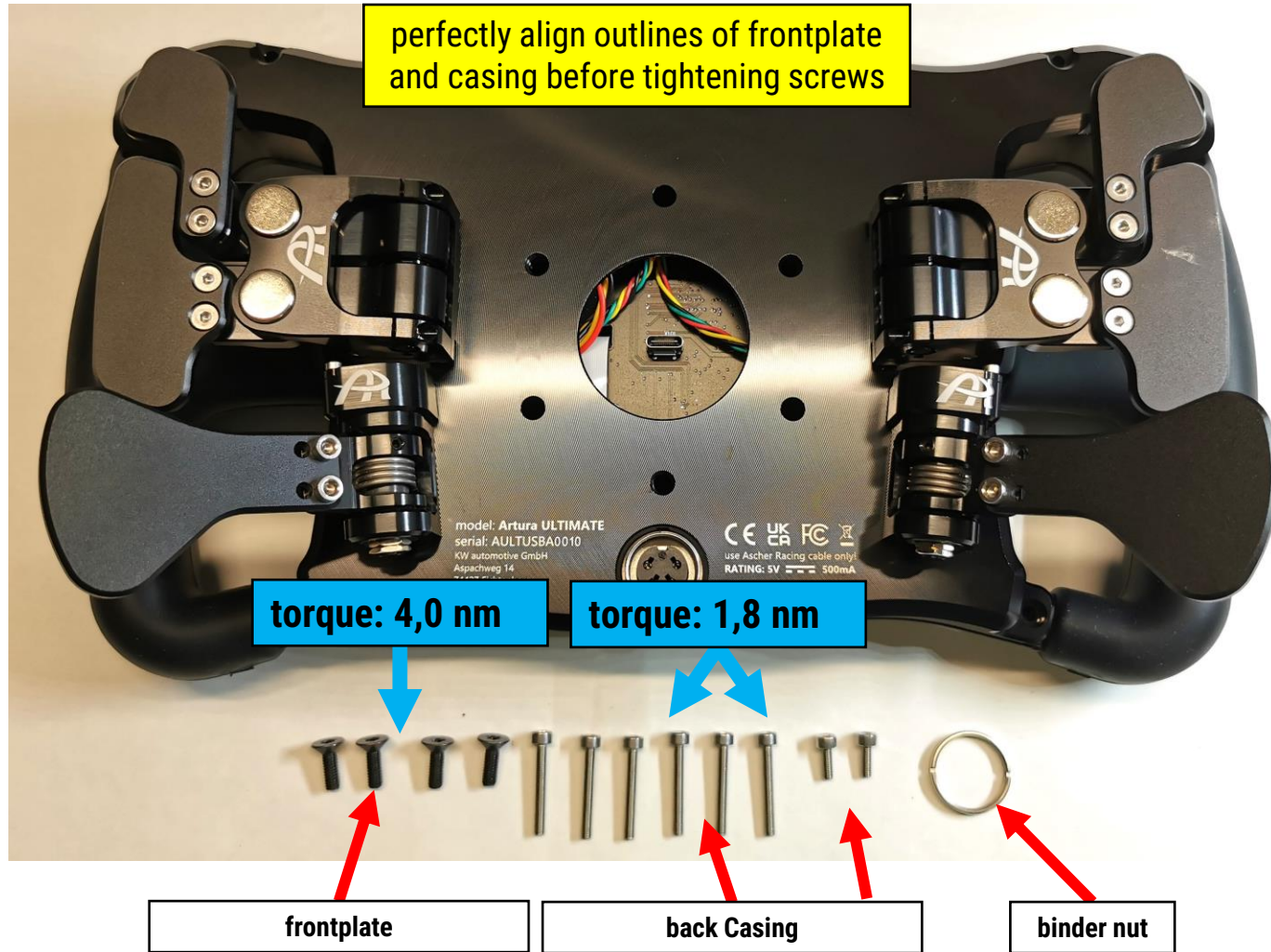
12. MOUNT ROTARY SWITCH



13. MOUNT CASING - FRONTPLATE

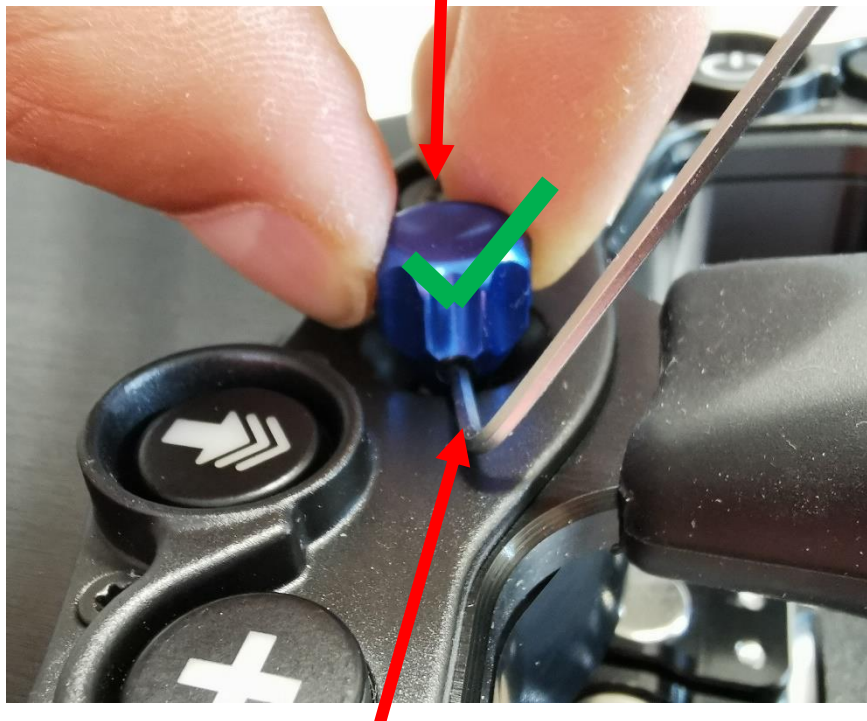


14. MOUNT CASING - FRONTPLATE



15. MOUNT KNOBS - JOYSTICK

hold joystick knob with fingers when tightening the grub screw!

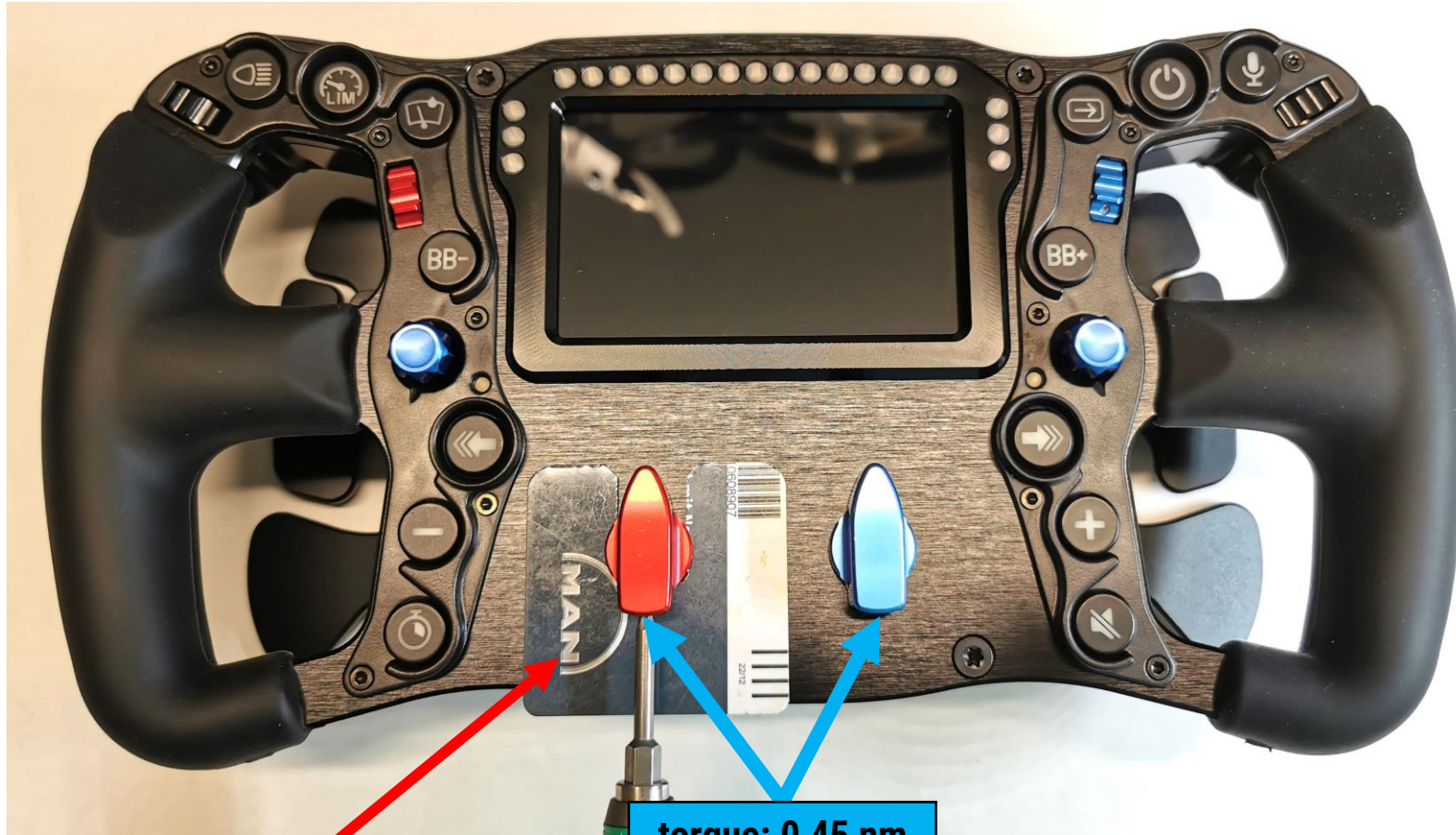


turn joystick so that the hex tool fit's in the groove of to plastic button cover

do not tighten the grub screw without holding the knob in order to avoid joystick damage!



16. MOUNT KNOBS - ROTARY



use plastic card to create a gap of 1mm between knob and frontplate

torque: 0,45 nm

Now get back behind the wheel and enjoy!

For questions regarding the process of swapping any components, please don't hesitate and contact info@ascher-racing.com

